

THE ZYTO™ SCAN HOW IT WORKS

Every cell in your body is networked together, sending and receiving information to coordinate the millions of functions your body processes every day.

As your body adjusts to changing conditions to stay healthy, it uses these communication pathways to direct available resources to maintain balance. Your body is so effective that most of the time you never know these adjustments are happening.

When your body encounters a larger health challenge, you may begin to show symptoms. Symptoms are the outward expression of your body's best efforts to deal with these challenges. Common symptoms may include elevated body temperature, swelling, pain, tiredness, or a cough. Once you recognize a symptom you can begin to assist the healing process. Things like getting more sleep, drinking more water, taking nutritional supplements, or medication under a medical professional's supervision, can help your body deal with these challenges.

Too often we ignore our health until we get so sick that symptoms appear. Wouldn't you rather support your body's day-to-day efforts to stay healthy?

But how can you learn what your body needs to stay healthy? Wouldn't it be nice if you could just ask?

The ZYTO Scan


During a ZYTO scan, the Hand Cradle measures your body's galvanic skin response (GSR). The data gathered by the Hand Cradle is evaluated by the software in the context of various digital signatures. Digital signatures are representative of a wide range of things like foods, nutritional supplements, body organs, and systems.

Digital signatures can be organized into sequences for scanning. You can think of ZYTO scans as questionnaires to which your body's GSR data provides the answers.

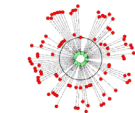
These scans are designed by some of the best and brightest professionals in the world for the purpose of providing the most pertinent information about your wellness.

At the completion of a scan, the software's analysis is documented in the form of a report. Information gathered in this way can help you make better decisions for your health.

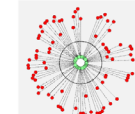
ZYTO Balance 5.0 Standard Report

	ZYTO Demo 956 Anystreet Anytown, Alabama 88888 Phone: (123) 456-7777	Test Male Return Appointment:
---	--	----------------------------------

PRODUCT SCAN RESULTS



Baseline
Biomarkers Out of Range: 91



ABC Wellness Formula
Biomarkers Brought Into Range: 11
Category: All ABC Products, General Wellness
Usage Directions: 3 Tablets 3 times per day



ABC Revitalizing Sleep Formula
Additional BioMarkers Brought Into Range: 8
Category: All ABC Products, General Wellness
Usage Directions: 2 Capsules 1 times per day

ZYTO technologies is not intended to be used in the diagnosis, cure, treatment, mitigation, or prevention of any disease or medical condition. The diagnosis and treatment of medical conditions should only be undertaken by qualified medical professionals. ZYTO professional software, including the Balance, Select, Elite, and EVOX, provides general wellness information, including information about biological coherence, and should not be used without the involvement of licensed healthcare professionals.

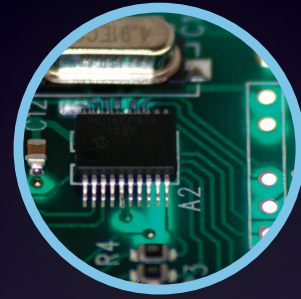
MKP-00101.A

ZYTO.com

THE ZYTO SCAN HOW IT WORKS

1. ZYTO Hand Cradle

The ZYTO Hand Cradle is a medical device cleared by the U.S. Food and Drug Administration to measure the user's galvanic skin response (GSR). It is not cleared for the diagnosis or treatment of any disease or medical condition.



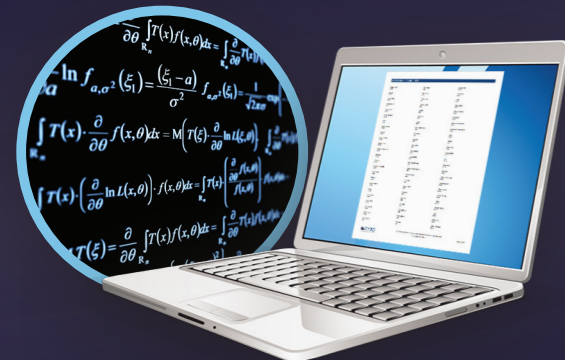
2. Galvanic Skin Response

GSR is an established technology that measures fluctuations in electrical conductivity of the skin. One familiar application of GSR is lie detector testing. During a ZYTO scan, the user's baseline GSR is measured by the Hand Cradle and then compared, by ZYTO software, to digital signatures in the ZYTO database.



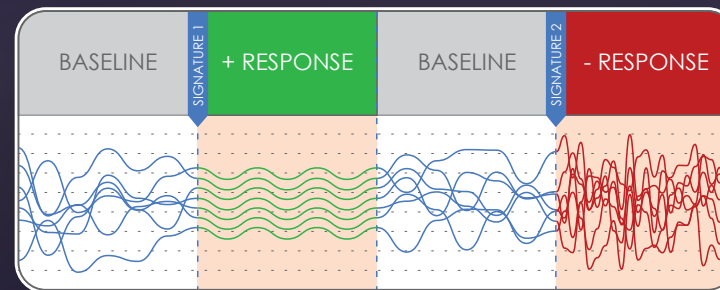
3. Digital Signatures

The digital signatures in the ZYTO library each represent a physical item. After the software introduces each digital signature, a new corresponding GSR reading is taken. The GSR reading may have changed, having been affected by an energetic link between the digital signature and the user.



4. Proprietary Software

Each baseline GSR measurement and the GSR measurements taken after the software runs each digital signature become inputs into a unique formula found only in the ZYTO software.



5. Biological Preference

The numeric value produced by the ZYTO software indicates how divergent the digital signature response was from the baseline. We call digital signatures that produce more coherent or balanced responses biological preferences.

dR	Digital Signature
+54.34	Ginseng Capsule
+48.12	St. John's Wort
+37.19	CoQ10
+18.02	Cal-Mag Tablets
2.33	Zinc
	Valerian

6. Prioritized Results

An easy-to-read report is generated that displays a ranking of the physical items whose corresponding digital signatures resulted in greater biological preference. The report is available to assist individuals as they choose options to maintain health and wellness. We call this whole process biocommunication.